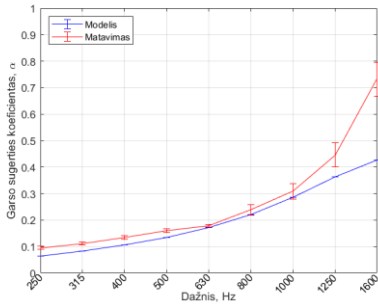
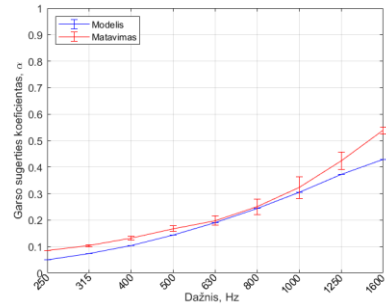


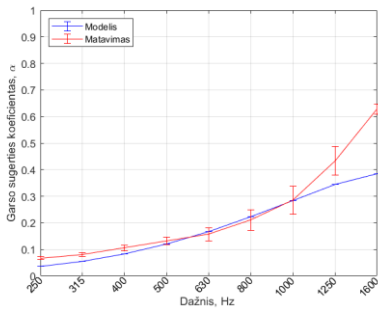
## A priedas. Popieriaus gamybos dumblo kompozitų teorinio garso sugerties tyrimo verifikavimo rezultatai



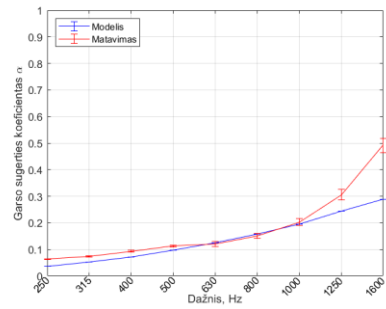
1–2,5 mm 50 %



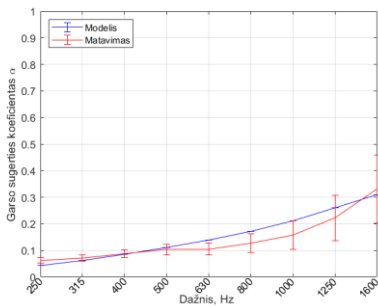
1–2,5 mm 60 %



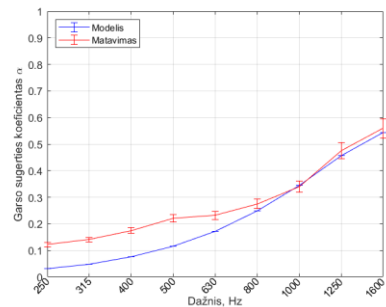
1–2,5 mm 70 %



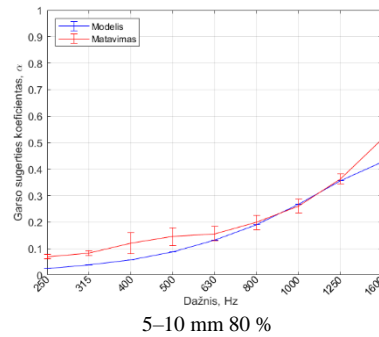
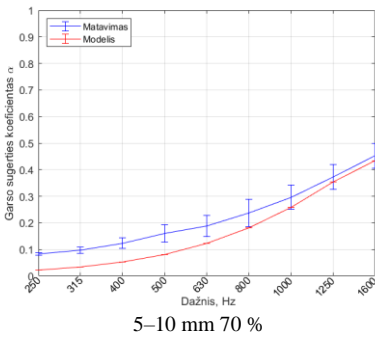
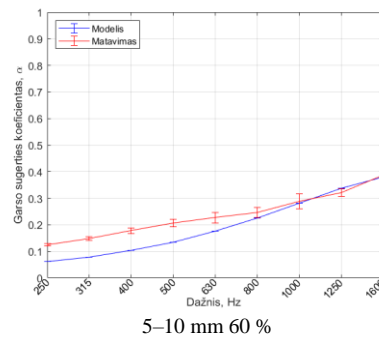
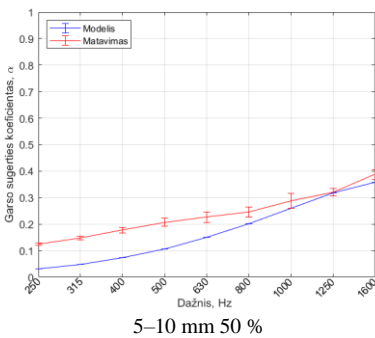
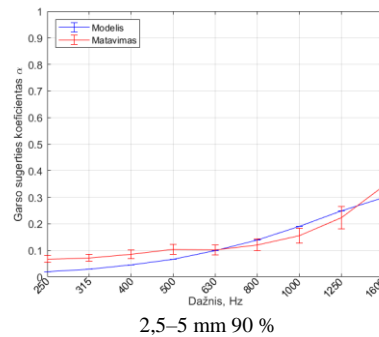
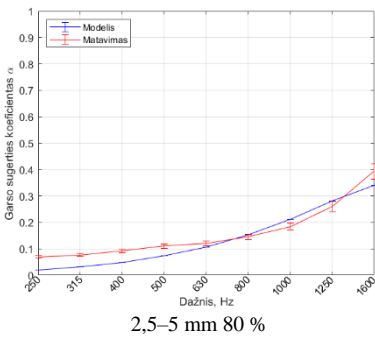
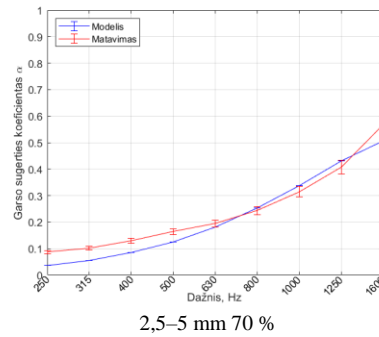
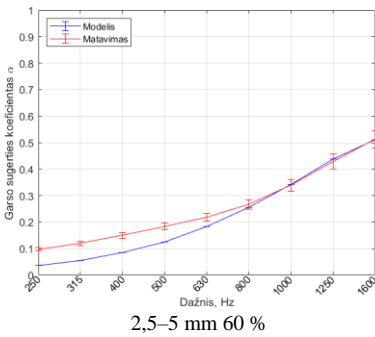
1–2,5 mm 80 %

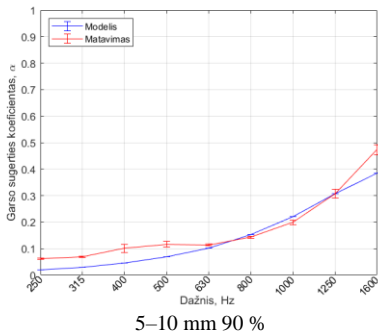


1–2,5 mm 90 %

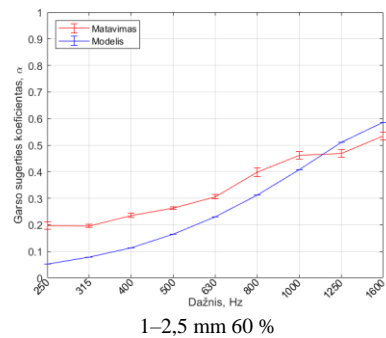
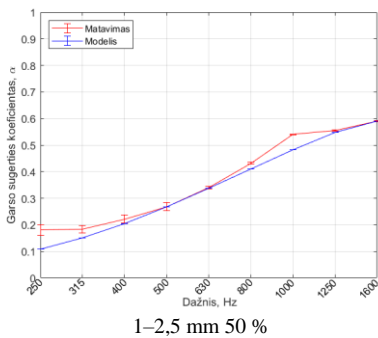


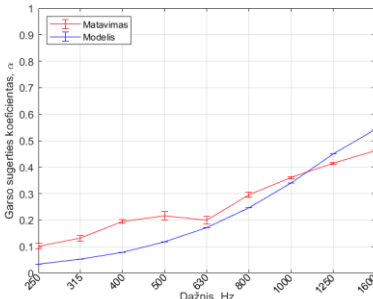
2,5–5 mm 50 %



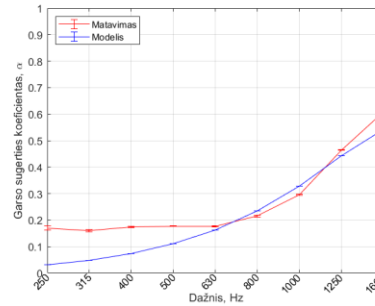


**A.1 pav.** PGD ir gesintų kalkių teorinio tyrimo verifikavimo rezultatai  
**Fig. A.1.** Verification of theoretical study results with experimental, PS and slaked lime composites

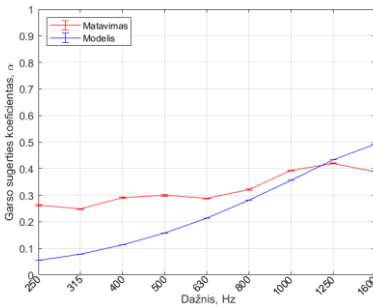




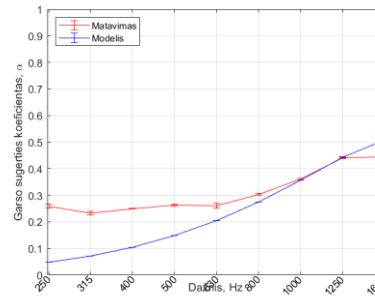
1–2,5 mm 70 %



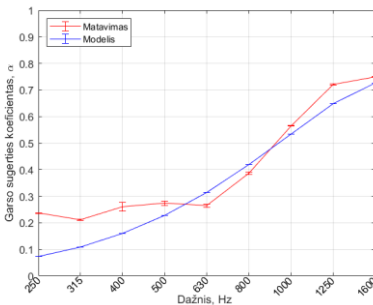
1–2,5 mm 80 %



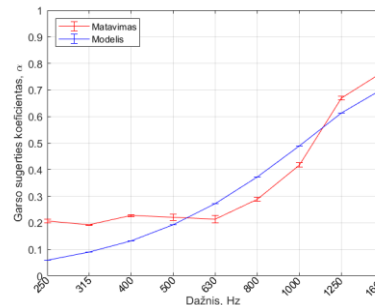
2,5–5 mm 50 %



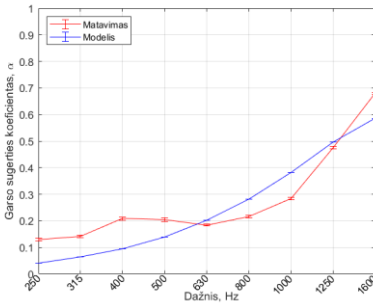
2,5–5 mm 60 %



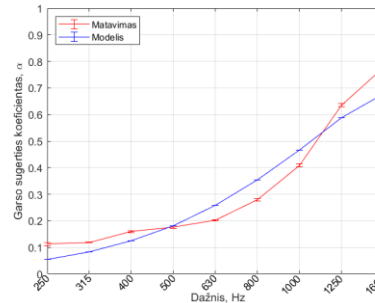
2,5–5 mm 70 %



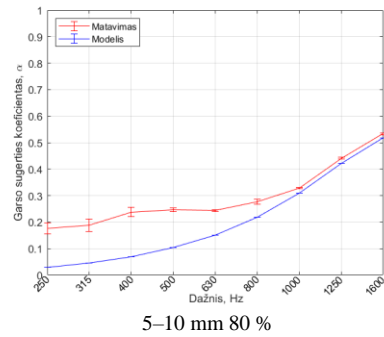
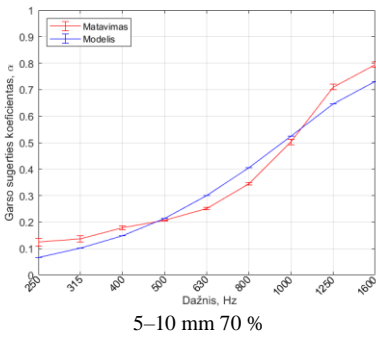
2,5–5 mm 80 %



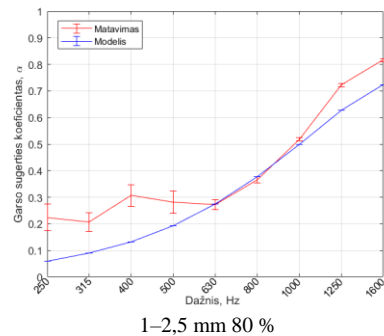
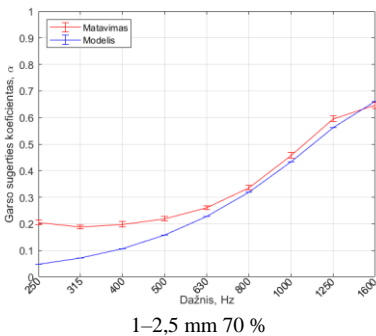
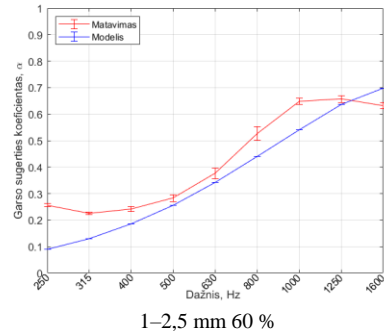
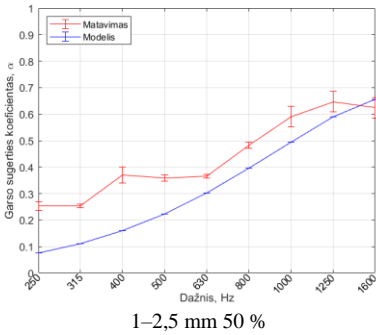
5–10 mm 50 %

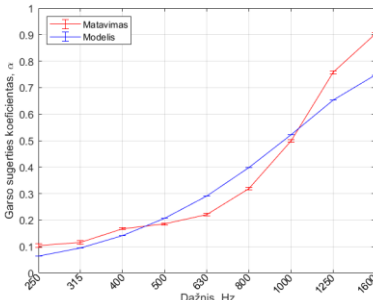


5–10 mm 60 %

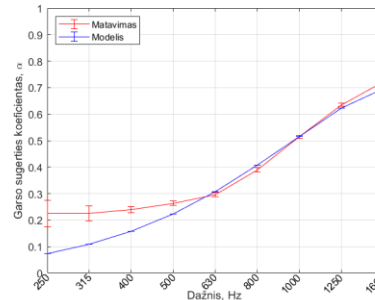


**A.2 pav.** PGD ir molio teorinio tyrimo verifikavimo rezultatai  
**Fig. A.2.** Verification of theoretical study results with experimental, PS and clay composites

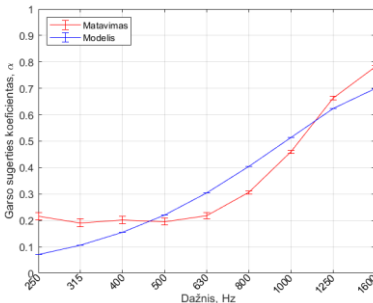




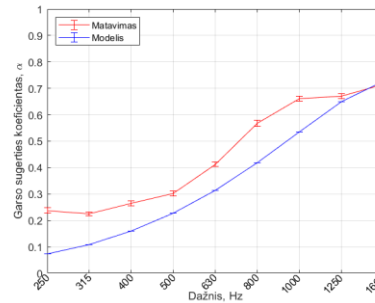
1–2,5 mm 90 %



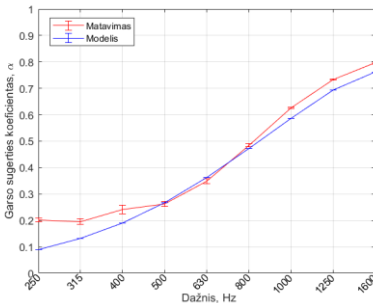
2,5–5 mm 50 %



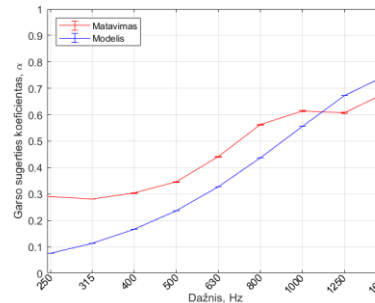
2,5–5 mm 60 %



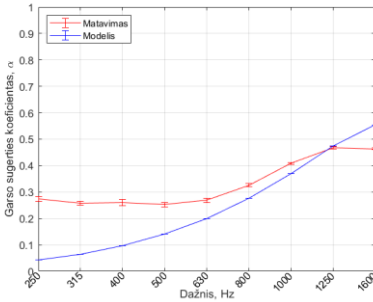
2,5–5 mm 70 %



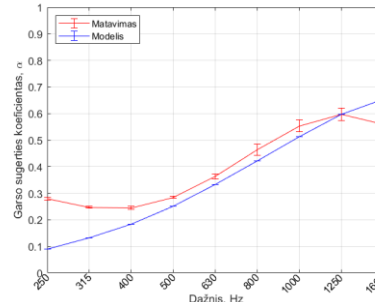
2,5–5 mm 80 %



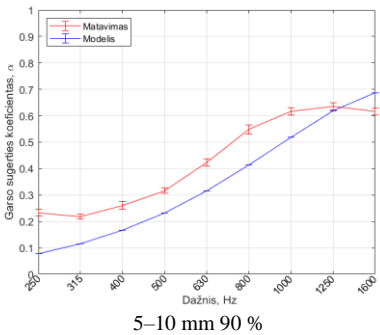
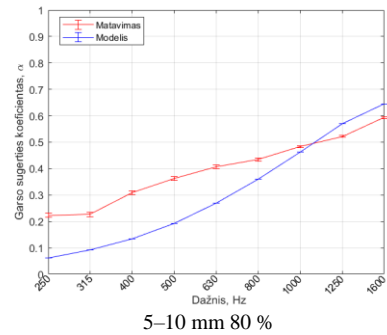
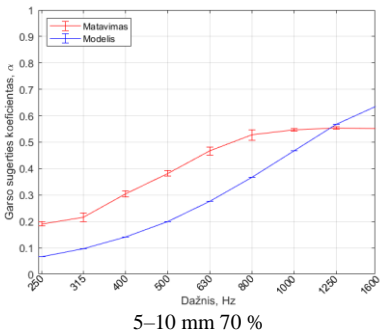
2,5–5 mm 90 %



5–10 mm 50 %



5–10 mm 60 %



**A.3 pav.** PGD ir cemento teorinio tyrimo verifikavimo rezultatai  
**Fig. A.3.** Verification of theoretical study results with experimental, PS and cement composites