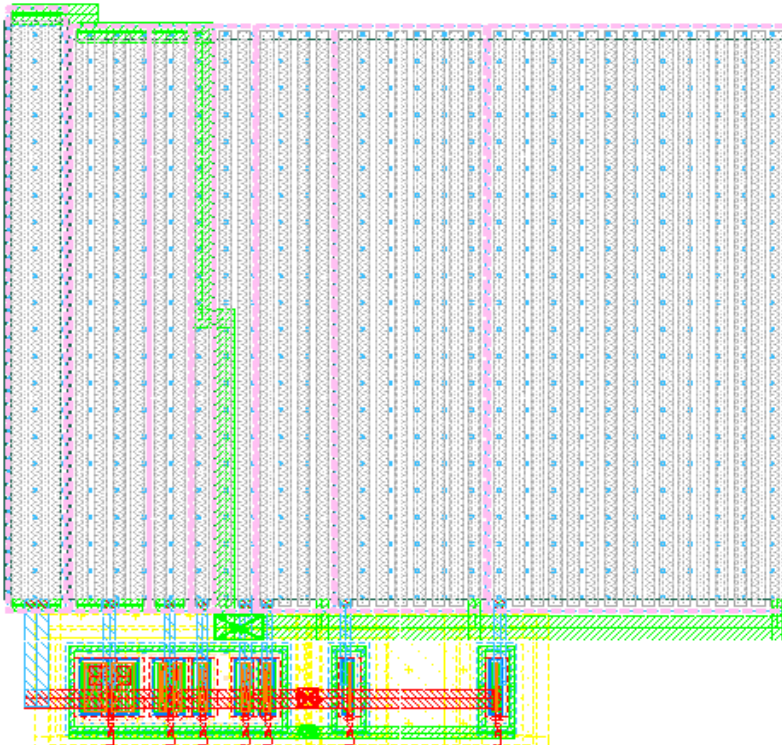
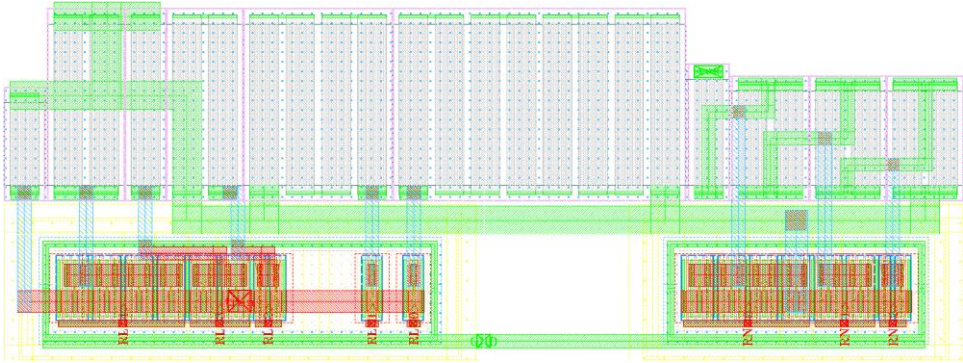


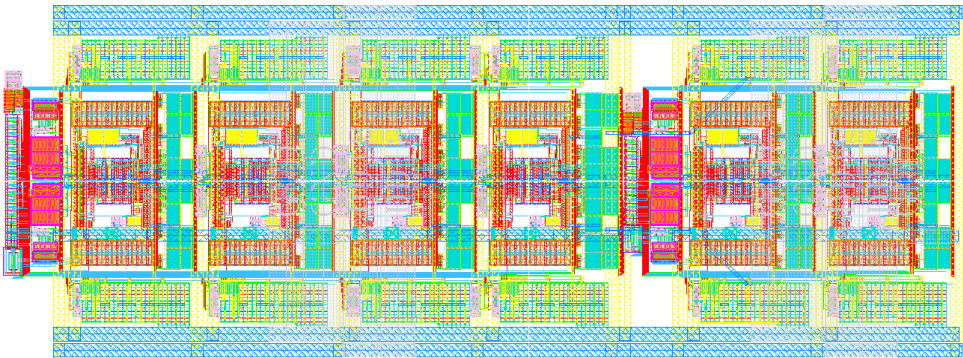
A priedas. Suprojektuotų struktūrų topologijos



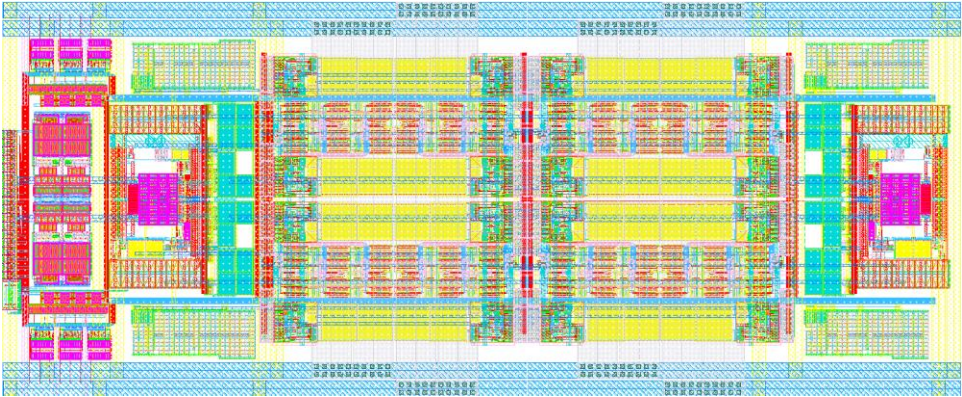
A.1 pav. 6 k Ω nominalo LRM topologija. Užimamas plotas: 32 μm \times 31,2 μm
Fig A.1. 6 k Ω PRM structure. Occupied area: 32 μm \times 31,2 μm



A.2 pav. 6 k Ω nominalo NLRM topologija. Užimamas plotas: 33,4 μm \times 12,5 μm
Fig A.2. 6 k Ω SPRM structure. Occupied area: 33,4 μm \times 12,5 μm



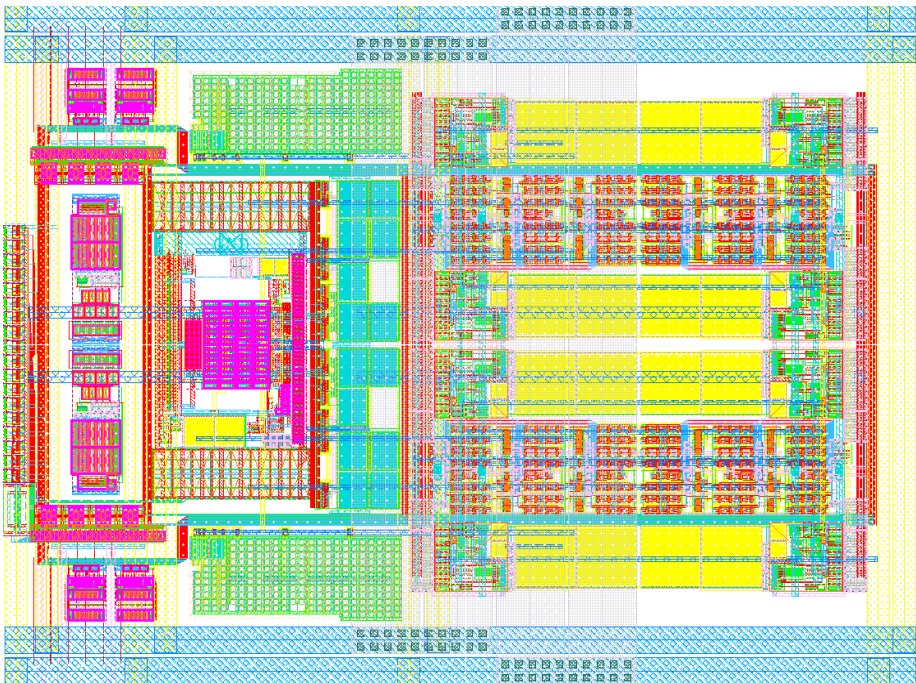
A.3 pav. DKF filtro su LRM derinimo struktūromis topologija. Užimamas plotas: 830 μm \times 310 μm
Fig A.3. Layout view of the DTF with PRM structure. Occupied area: 830 μm \times 310 μm



A.4 pav. TKF filtro su TAGR2 derinimo struktūromis BiF pakopos topologija.

Užimamas plotas: $725 \mu\text{m} \times 307 \mu\text{m}$

Fig A.4. Layout view of the CTRF biquad stage with CTAF2 structure. Occupied area: $725 \mu\text{m} \times 307 \mu\text{m}$



A.5 pav. TKF filtro su TAGR2 derinimo pirmos pakopos topologija. Užimamas plotas: $410 \mu\text{m} \times 307 \mu\text{m}$

Fig A.5. Layout view of the CTRF single pole stage with CTAF2 structure. Occupied area: $410 \mu\text{m} \times 307 \mu\text{m}$